



Automated Ceiling
Registers, LLC

HVAC CONTRACTOR

THE QUICK & EASY™ REGISTER SYSTEM

A GREEN HOME PRODUCT



ACR's comprehensive array of airflow control and air quality products now include a register system that eliminates the need for register boxes in residential applications.

Use The Quick & Easy™ Register System to speed up your installations, reduce your labor costs and provide the following advantages to your company:

1. Lower your installation costs with the one piece collar/plate system that quickly slides inside the supplied 24-inch mounting rails, which are then mounted to a ceiling or wall in one minute or less.

2. Connect the metal duct to the crimped collar or band the flex duct liner to the collar and then simply pull the outer duct insulation layer down until it contacts the metal plate at the base of the collar.

3. Stop worrying about how many of each size of register box and register you need. All Quick & Easy™ registers are 9 1/4 inches in diameter, but they are smaller than most conventional registers. The collar is 8 inches in diameter. Use the appropriate duct reducer to connect ducts smaller than 8 inches. (An 8-inch elbow is recommended on two story installations.)

4. Forget all that sealing and insulating that you must do on those old rectangular register boxes, because they have been eliminated.

5. You are ready for sheet rock or wallboard. The crew simply cuts out a round hole using the outside edge of the integral trim ring as a guide. They think it is just another can light.

6. After the texturing and finishing is done, simply caulk the sheet rock around the integral trim ring and snap the Quick & Easy™ register into the hole, then apply a small bead of caulk around the edge of the seat where it touches the ceiling or wall. There are no screws to install. (Automated registers use 24VAC power and a control input such as a simple wall switch, thermostat (24 VAC), home automation (5VDC) or programmed wireless KEYFOB, that looks just like your car door opener.)

7. Stop customer complaints about those rattling metal registers and uncomfortable drafts. Airflow is omnidirectional, quiet over a wide range of flow rates and highly efficient due to the smooth aerodynamic design of the airflow path.

ACR, the technological leader in ventilation and airflow control.

PHOTOS AND SPECIFICATIONS

Dimensions & Weight

D x H	= Register: 9 1/4" x 4.125"
D / L x W x H	= Collar/Plate: 8" / 10" x 10" x 3 7/16"
L x W	= Rail: 25" x 1"
Weight	= Ship 16 Rough-In Kits = 25#
Weight	= Ship 16 100M-F Finish Kits = 15#
Weight	= Ship 16 100A-F Finish Kits = 20#



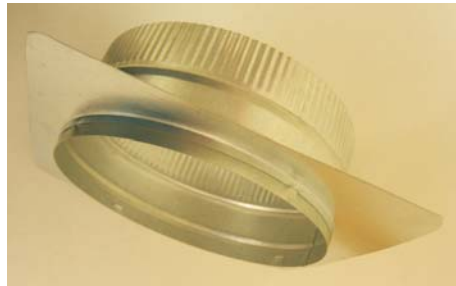
Collar/Plate & Rails



Rock & Adapter

Available Models:

100-RITR	= Rough-in Kit With Integral Trim Ring
100M-F	= Manual Register Finish Kit
100A-F	= Automated Register Finish Kit
100A-F3W	= Automated Register With 3 Wire Control
100A-FKF	= Automated Register With Wireless KEYFOB control (address = 0)
100A-FKFC(#)	= Automated Register With Custom KEYFOB (specify address: 0 - 1023)
100AZ(#)	= Zone Cable Kit with Register TEE's & Cables (specify no. of registers: 2-30)
LS	= Local Control Switch
QETOOL	= Register Removal Tool



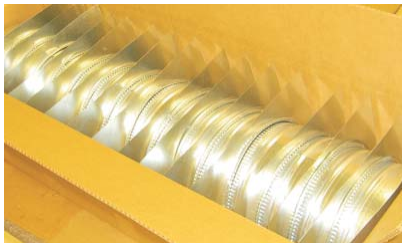
Collar/Plate with Integral Trim Ring



Manual Register



Removal Tool



16 Rough-In Kits



16 Finish Kits

YOUR AUTHORIZED ACR DISTRIBUTOR

2512 Summit Avenue, Suite 307, Plano, Texas 75074
Tel: (972) 509-2400 / (800) 451-6539 / Fax: (972) 509-2401

www.acrc.biz
email: sales@acrc.biz



Made in USA